

MotoSafe

EARPLUGS



WITH SPECIAL
WIND NOISE FILTERS

•
ATTENUATES HARMFUL
WIND NOISE

•
SPEECH AND
AMBIENT NOISES
REMAIN AUDIBLE

•
PREVENTS
NOISE DEAFNESS

Safe and relaxed motorcycling

ALPINE
HEARING PROTECTION



PREVENT HEARING DAMAGE

Even at a speed of 100 km/h, motorcyclists are exposed to more than 90 dB of noise. According to the law, at a noise level exceeding 80 dB, hearing protection is compulsory. So wear MotoSafe, Alpine's safe earplugs.

ADAPTS TO THE SHAPE OF THE AUDITORY DUCT

NO PRESSURE ON OR IN THE EAR

NO SENSE OF BEING CUT OFF

LONG LIFE

This pack contains two earplugs, two different exchangeable filter sets and a handy insertion tube. The green filters are for average use. The yellow filters offer greater attenuation.

The special wind noise filters guarantee optimum protection whilst you can still hear ambient noises and can communicate clearly.

Enjoy more and ride longer with MotoSafe



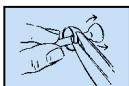
To insert the earplugs, use the insertion tube. Slide the tube over the filter stem. Slightly pull up your ear, and insert the earplug.



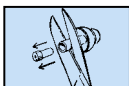
Rotate the insertion tube until the earplug fits snugly.



If you have a narrow auditory duct, you can simply adjust the earplug by carefully partially or fully cutting off the largest lamella all-round, using a sharp pair of scissors.



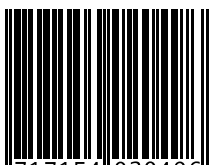
The earplug may protrude slightly too far from your ear. In that case, carefully remove the filter from the earplug. Then cut off a short section of the stem, and replace the filter in the earplug.



Alpine earplugs last longer if you keep them clean. Clean them regularly using lukewarm water and a little soap.

Average attenuation values

	Hz	125	250	500	1000	2000	4000	8000
Green filter	dB	14,8	15,0	15,7	18,7	26,6	24,4	18,9
Yellow filter	dB	18,8	15,6	16,0	18,5	27,7	28,9	22,0



ALPINE
HEARING PROTECTION

www.alpine.nl

8 717154 020496 >

Manufactured by Alpine Gehoorbescherming Nederland B.V. - Soesterberg - The Netherlands